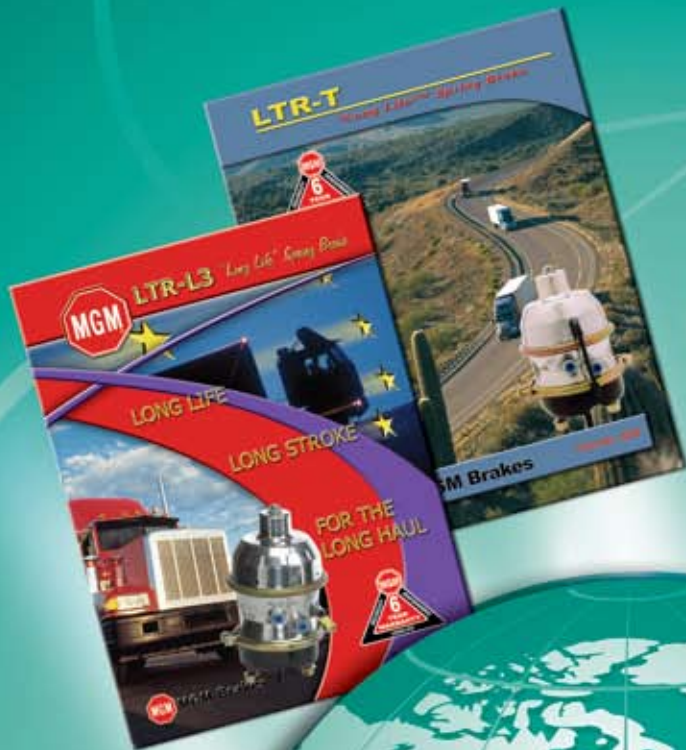


# LTR SERIES



Innovative Design,  
Quality Craftsmanship—  
The Long-Life Benchmark



**Section 3: Long Life Double Diaphragm Spring Brakes...**

48-57

**Standard Stroke Model**

LTR-T Integral Release Bolt, Tamper Resistant, Tube..... 50-51

**Long Stroke Model**

LTR-L3 Integral Release Bolt, Tamper Resistant, Long Stroke..... 53-53

LTR-L3W Integral Release Bolt, Tamper Resistant, Long Stroke, Welded NPC..... 54-55

LTR-L3T Integral Release Bolt, Tamper Resistant, Long Stroke w/Tube..... 56-57

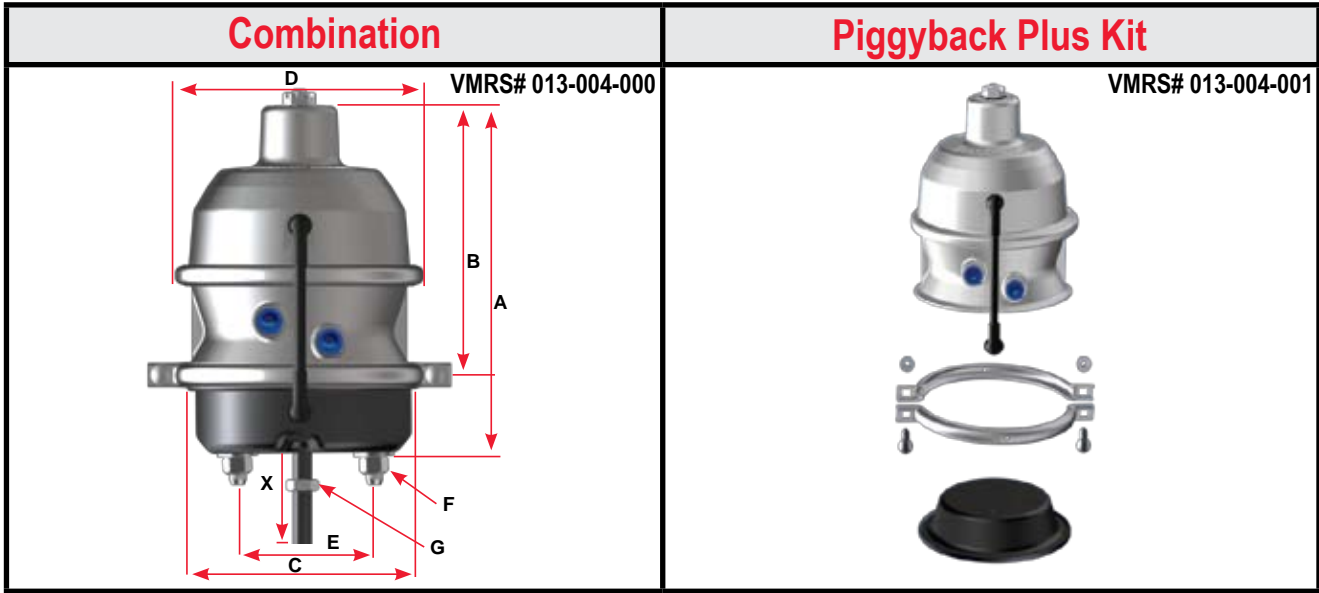


FEATURES	LTR-T	LTR-L3	LTR-L3W	LTR-L3T
Tamper-Resistant Mechanically Locked Spring Housing	■	■	■	■
Molded Nitrile Rubber Push-Rod Air Seal	■	■	■	■
Center Hole Shield	■	■	■	■
360 Aluminum Alloy	■	■	■	■
External Breather Tube	■	■	■	■
Integral Release Bolt	■	■	■	■
Stroke Alert	■	■	■	■
Heavy-Duty "Long Life" Power Spring	■	■	■	■
Polymer Push-Rod Guides	■	■	■	■
3 Inch (76.2mm) Long Stroke	■	■	■	■
6 Year Limited Warranty	■	■	■	■
Low Friction Piston & Guide	■	■	■	■
Heavy-Duty Steel Non-Pressure Chamber	■	■	■	■
Heavy-Duty Nylon Reinforced Diaphragms	■	■	■	■
Weld Reinforced Non Pressure Chamber	■	■	■	■

■ Indicates Feature

NOTE: Product information and specifications subject to change without notice.

## Standard Stroke Model



### LTR-T Model Features

- Tamper Resistant Design (U.S. Patent No. 5,067,391)
- Molded Nitrile Rubber Push-Rod Air Seal
- Center Hole Shield
- Six (6) Year Limited Warranty
- Integral Release Bolt
- 360 Aluminum Alloy
- Low Friction Piston & Guide
- Heavy-Duty "Long Life" Power Spring 100 lb (45.4 kg) additional parking brake force @ 1.25" (31.8 mm) of stroke
- Heavy-Duty Steel Non-Pressure Chamber (8 Gauge Standard on Type 3030 Aftermarket Models)
- Stroke Alert
- Polymer Push-Rod Guides
- Heavy-Duty Nylon Reinforced Diaphragms
- Heavy-Duty Nylon Reinforced Neoprene Diaphragms (Optional)
- External Breather Tube

P/N Series	3827	3831
Model	LTR2430LT	LTR3030T
Size	2430	3030
Stroke	2.50" (63.5 mm)	2.50" (63.5mm)
P/N Combination SAE	3827051	3831051
P/N Piggyback Plus Kit SAE	3827008	3831008
P/N Combination METRIC	***	***
Wt. Combination	18.5 lb (8.4 kg)	19.9 lb (9.0 kg)
Wt. Single	11.4 lb (5.2 kg)	11.7 lb (5.3 kg)
A	11.8" (299.7 mm)	11.86" (301.2 mm)
B	9.68" (245.9 mm)	9.46" (240.3 mm)
C	7.38" (187.5 mm)	8.27" (210.1 mm)
D	8.18" (207.8 mm)	8.18" (207.8 mm)
E	4.75" (120.7 mm)	
F	5/8" - 11 UNC (M16 x 1.5 - 6g)	
G	5/8" - 18 UNF (M16 x 1.5 - 6g)	
Inlets	3/8" - 18 NPTF (M16 x 1.5 - 6H)	
X - Min. (in the caged position)	8.00" (203.2 mm)	

• For actuators manufactured with neoprene diaphragms, refer to section 9.

\*\*\* For information on availability, contact MGM Brakes Customer Service, 1-800-527-1534 x750 (U.S. & Canada), or for International email: [mail@mgmbrakes.com](mailto:mail@mgmbrakes.com)

NOTE: Product information and specifications subject to change without notice.

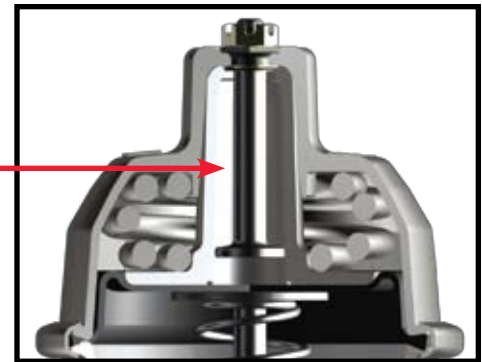
Replacement Parts			
P/N Series		3827	3831
Model		LTR2430LT	LTR3030T
1	Kit - NP Chamber (a)	9015152	9015157
2	Kit - Nuts & Bolts	9003001	9003001
3	Clamp Band Assembly	8216025	8216045
4	Diaphragm	8017141	8017730
5	Kit - Push-Rod Assembly (a) SAE	9064002	9064003
5a	Kit - Push-Rod Assembly (a) METRIC	***	***
6	Return Spring	8068002	8068002
7	Kit - Center Hole Shield	9065002	9065002
8	NP Chamber Assembly (a)	9015151	9015122
9	Kit - Nuts & Washers SAE	9002001	9002001
9a	Kit - Nuts & Washers METRIC	***	***
10	Hex Nut - Yoke SAE	8130004	8130004
10a	Hex Nut - Yoke METRIC	***	***
11	Kit - Breather Tube	9081001	9081001
12	Piggyback Plus Kit SAE	3827008	3831008
<b>OPTIONAL ITEMS - For additional replacement parts, refer to Section 11.</b>			
Yoke Assembly		Refer to Replacement Parts Section 11	
Boot & Retainer		Refer to Replacement Parts Section 11	

Note: (a) To ensure correct stroke alert indicator positioning, these kits must be used only in the designated MGM Brakes units.



**Integral Manual Release Bolt**

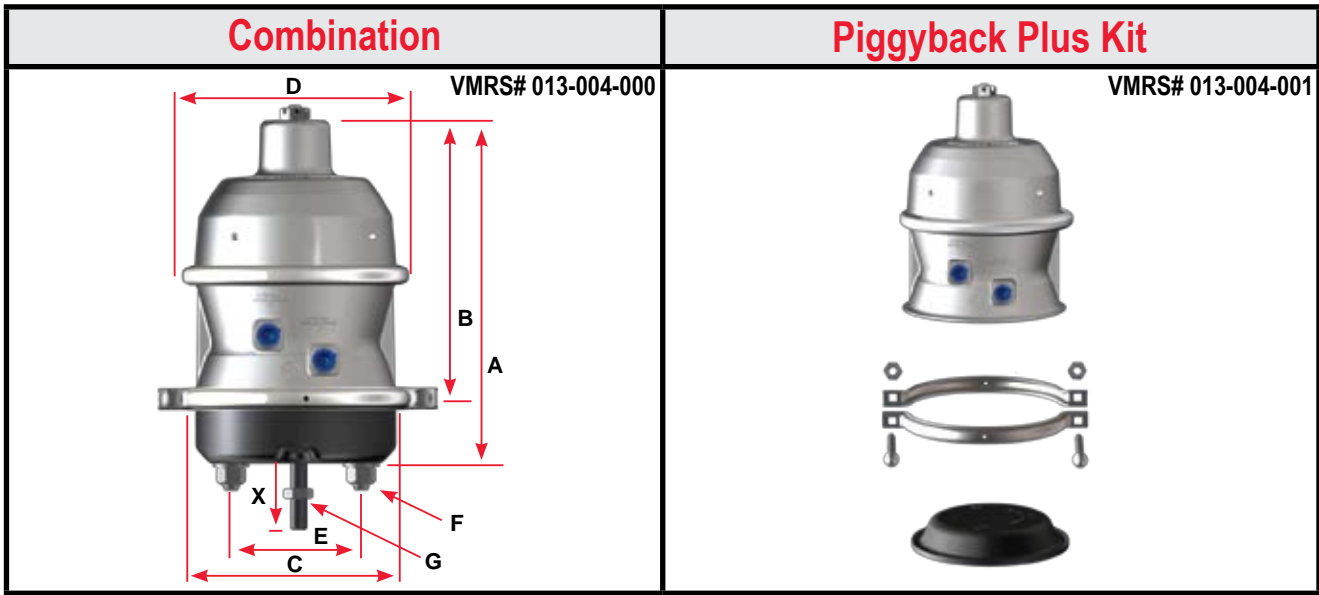
Permanently installed, can't get lost. Permits safe, easy release to reline brakes or move vehicle in absence of air pressure.



\*\*\* For information on availability, contact MGM Brakes Customer Service, 1-800-527-1534 x750 (U.S. & Canada), or for International email: mail@mgmbrakes.com  
 Note: Product information and specifications subject to change without notice.



## Long Stroke Model



### LTR-L3 Model Features

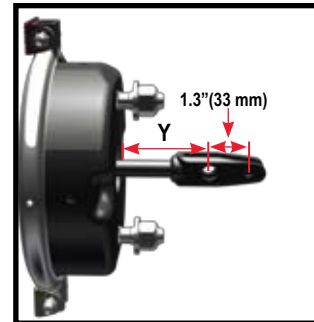
- Tamper Resistant Design (U.S Patent No. 5,067,391)
- Molded Nitrile Rubber Push-Rod Air Seal
- Center Hole Shield
- Six (6) Year Limited Warranty
- Integral Release Bolt
- 360 Aluminum Alloy
- Low Friction Piston & Guide
- Square Port Bosses (Long Stroke Identification)
- Heavy-Duty "Long Life" Power Spring 100 lb (45.4 kg) additional parking brake force @ 1.25" (31.8 mm) of stroke
- Heavy-Duty Steel Non-Pressure Chamber (8-Gauge Standard on Type 3030 Aftermarket Models)
- Stroke Alert
- Polymer Push-Rod Guides
- Heavy-Duty Nylon Reinforced Diaphragms
- Heavy-Duty Nylon Reinforced Neoprene Diaphragms (Optional)

P/N Series	3828	3832
Model	LTR2430L3	LTR3030L3
Size	2430	3030
Stroke	3.00" (76.2 mm)	3.00" (76.2 mm)
P/N Combination SAE	3828051	3832051
P/N Piggyback Plus Kit SAE	3828008	3832008
P/N Combination METRIC	***	***
Wt. Combination	19.3 lb (8.8 kg)	20.5 lb (9.3 kg)
Wt. Single	12.3 lb (5.6 kg)	12.6 lb (5.7 kg)
A	13.0" (330.2 mm)	13.0" (330.2 mm)
B	10.63" (270.0 mm)	10.63" (270.0 mm)
C	7.38" (187.5 mm)	8.27" (210.1 mm)
D	8.18" (207.8 mm)	8.18" (207.8 mm)
E	4.75" (120.7 mm)	
F	5/8" - 11 UNC (M16 x 1.5 - 6g)	
G	5/8" - 18 UNF (M16 x 1.5 - 6g)	
Inlets	3/8" - 18 NPTF (M16 x 1.5 - 6H)	
X - Min. (in the caged position)	8.00" (203.2 mm) (a)	

Note: (a) For Transit, Hendrickson Intraax / Vantraax Suspension applications and for units with mixed (SAE-METRIC) specifications and for actuators manufactured with neoprene diaphragms, refer to section 9.

\*\*\* For information on availability, contact MGM Brakes Customer Service, 1-800-527-1534 x750 (U.S. & Canada), or for International email: mail@mgmbrakes.com

NOTE: Product information and specifications subject to change without notice.



NOTE: Type 2430 and 3030 units equipped with welded-yoke and 2.25" (57.2 mm) Y-dimension are replaced by part number:

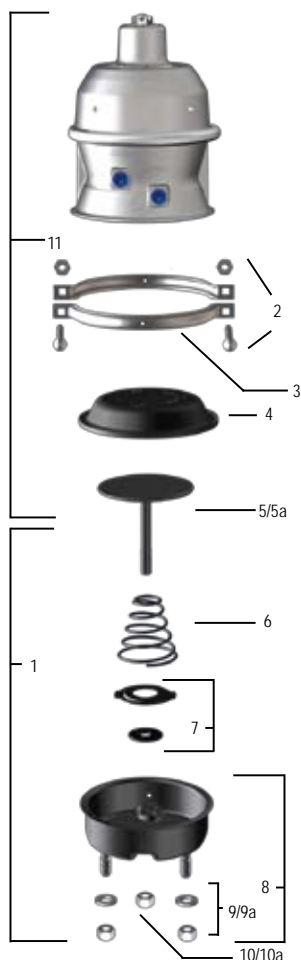
3828951 (LTR2430L3)  
3832951 (LTR3030L3)

NOTE: 3.0625" (77.8 mm) and 4.2" (106.7 mm) Y-dimensions also available. Contact customer service for more information.

Refer to Section 11 for replacement parts.

Replacement Parts			
P/N Series		3828	3832
Model		LTR2430L3	LTR3030L3
1	Kit - NP Chamber (a)	9015210	9015212
2	Kit - Nuts & Bolts	9003001	9003001
3	Clamp Band Assembly	8216025	8216045
4	Diaphragm	8017424	8017830
5	Kit - Push-Rod Assembly (a) SAE	9064006	9064008
5a	Kit - Push-Rod Assembly (a) METRIC	***	***
6	Return Spring	8068012	8068012
7	Kit - Center Hole Shield	9065002	9065002
8	NP Chamber Assembly (a)	8215200	8215501
9	Kit - Nuts & Washers SAE	9002001	9002001
9a	Kit - Nuts & Washers METRIC	***	***
10	Hex Nut - Yoke SAE	8130004	8130004
10a	Hex Nut - Yoke METRIC	***	***
11	Kit - Piggyback Plus SAE	3828008	3832008
<b>OPTIONAL ITEMS - For additional replacement parts, refer to Section 11.</b>			
Yoke Assembly		Refer to Replacement Parts Section 11	
Boot & Retainer		Refer to Replacement Parts Section 11	

Note: (a) To ensure correct stroke alert indicator positioning, these kits must be used only in the designated MGM Brakes units.



**Center Hole Shield**

Permits visual inspection of stroke alert but prevents entry of contaminants.

\*\*\* For information on availability, contact MGM Brakes Customer Service, 1-800-527-1534 x750 (U.S. & Canada), or for International email: mail@mgmbrakes.com  
 Note: Product information and specifications subject to change without notice.

## Long Stroke Model

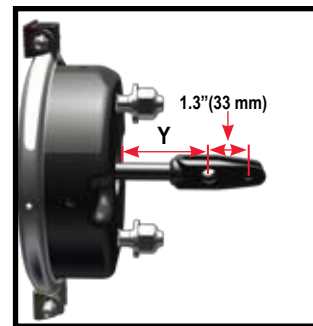
Combination	Piggyback Plus Kit
<p>VMRS# 013-004-000</p>	N/A

### LTR-L3W Model Features

- Tamper Resistant Design (U.S Patent No. 5,067,391)
- Molded Nitrile Rubber Push-Rod Air Seal
- Center Hole Shield
- Six (6) Year Limited Warranty
- Integral Release Bolt
- 360 Aluminum Alloy
- Low Friction Piston & Guide
- Square Port Bosses (Long Stroke Identification)
- Heavy-Duty “Long Life” Power Spring 100 lb (45.4 kg) additional parking brake force @ 1.25” (31.8 mm) of stroke
- Heavy-Duty Steel Non-Pressure Chamber (8-Gauge Standard on Type 3030 Aftermarket Models)
- Stroke Alert
- Polymer Push-Rod Guides
- Heavy-Duty Nylon Reinforced Diaphragms
- Heavy-Duty Nylon Reinforced Neoprene Diaphragms (Optional)
- **Weld Reinforced Non-Pressure Housing**

P/N Series	3844
Model	LTR3030L3W
Size	3030
Stroke	3.00" (76.2 mm)
P/N Combination SAE	3844051
P/N Piggyback Plus Kit SAE	N/A
P/N Combination METRIC	***
Wt. Combination	20.5 lb (9.3 kg)
Wt. Single	N/A
A	13.0" (330.2 mm)
B	10.63" (270.0mm)
C	8.27" (210.1 mm)
D	8.18" (207.8 mm)
E	4.75" (120.7 mm)
F	5/8" - 11 UNC (M16 x 1.5 - 6g)
G	5/8" - 18 UNF (M16 x 1.5 - 6g)
Inlets	3/8" - 18 NPTF (M16 x 1.5 - 6H)
X - Min. (in the caged position)	8.00" (203.2 mm) (a)

Note: (a) For Transit, Hendrickson Intraax / Vantraax Suspension applications and for units with mixed (SAE-METRIC) specifications and for actuators manufactured with neoprene diaphragms, refer to section 9.



NOTE: Type 3030 units equipped with welded-yoke and 2.25" (57.2 mm) Y-dimension are replaced by part number:

**3844951 (LTR3030L3W)**

NOTE: 3.0625" (77.8 mm) and 4.2" (106.7 mm) Y-dimensions also available. Contact customer service for more information.

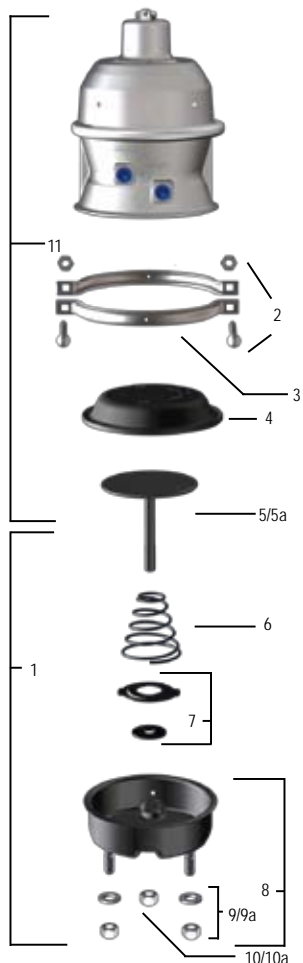
Refer to Section 11 for replacement parts.

\*\*\* For information on availability, contact MGM Brakes Customer Service, 1-800-527-1534 x750 (U.S. & Canada), or for International email: [mail@mgmbrakes.com](mailto:mail@mgmbrakes.com)

NOTE: Product information and specifications subject to change without notice.

Replacement Parts		
P/N Series		3844
Model		LTR3030L3W
1	Kit - NP Chamber (a)	N/A
2	Kit - Nuts & Bolts	9003001
3	Clamp Band Assembly	8216045
4	Diaphragm	8017830
5	Kit - Push-Rod Assembly (a) SAE	9064008
5a	Kit - Push-Rod Assembly (a) METRIC	***
6	Return Spring	8068012
7	Kit - Center Hole Shield	9065002
8	NP Chamber Assembly (a)	9015260
9	Kit - Nuts & Washers SAE	9002001
9a	Kit - Nuts & Washers METRIC	***
10	Hex Nut - Yoke SAE	8130004
10a	Hex Nut - Yoke METRIC	***
11	Kit - Piggyback Plus SAE	N/A
<b>OPTIONAL ITEMS - For additional replacement parts, refer to Section 11.</b>		
Yoke Assembly		Refer to Replacement Parts Section 11
Boot & Retainer		Refer to Replacement Parts Section 11

NOTE: (a) To ensure correct stroke alert indicator positioning, these kits must be used only in the designated MGM Brakes units.



**Weld Reinforced Non-Pressure Housing**

Heavy-gauge formed steel flat-bottom design, epoxy-coated for total corrosion protection and "weld-reinforced" mounting studs for added support in extreme vibration applications. (bolt actually epoxy coated - depicted here lighter for visual purposes)

- 8-Gauge Standard on Type 3030 & 3036 Aftermarket Models
- 6 Gauge Standard on Type 36 Models

\*\*\* For information on availability, contact MGM Brakes Customer Service, 1-800-527-1534 x750 (U.S. & Canada), or for International email: [mail@mgmbrakes.com](mailto:mail@mgmbrakes.com)

NOTE: Product information and specifications subject to change without notice.



## Long Stroke Model

Combination	Piggyback Plus Kit
	<p>VMRS# 013-004-001</p> <p>N/A</p>

### LTR-L3T Model Features

- Tamper Resistant Design (U.S Patent No. 5,067,391)
- Molded Nitrile Rubber Push-Rod Air Seal
- Center Hole Shield
- Six (6) Year Limited Warranty
- Integral Release Bolt
- 360 Aluminum Alloy
- Low Friction Piston & Guide
- Square Port Bosses (Long Stroke Identification)
- Heavy-Duty “Long Life” Power Spring 100 lb (45.4 kg) additional parking brake force @ 1.25” (31.8 mm) of stroke
- Heavy-Duty Steel Non-Pressure Chamber (8-Gauge Standard on Type 3030 Aftermarket Models)
- Stroke Alert
- Polymer Push-Rod Guides
- Heavy-Duty Nylon Reinforced Diaphragms
- Heavy-Duty Nylon Reinforced Neoprene Diaphragms (Optional)
- **External Breather Tube**

P/N Series	3833
Model	LTR3030L3T
Size	3030
Stroke	3.00" (76.2 mm)
P/N Combination SAE	3833051
P/N Piggyback Plus Kit SAE	N/A
P/N Combination METRIC	***
Wt. Combination	20.5 lb (9.3 kg)
Wt. Single	N/A
A	13.0" (330.2 mm)
B	10.63" (270.0mm)
C	8.27" (210.1 mm)
D	8.18" (207.8 mm)
E	4.75" (120.7 mm)
F	5/8" - 11 UNC (M16 x 1.5 - 6g)
G	5/8" - 18 UNF (M16 x 1.5 - 6g)
Inlets	3/8" - 18 NPTF (M16 x 1.5 - 6H)
X - Min. (in the caged position)	8.00" (203.2 mm)

• For actuators manufactured with neoprene diaphragms, refer to section 9.

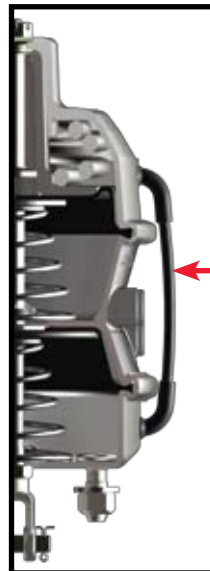
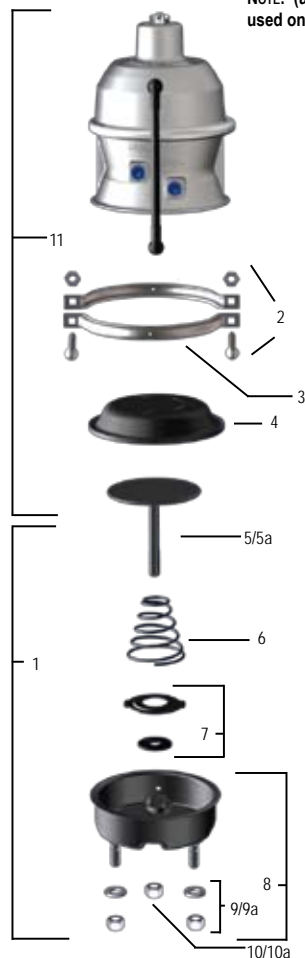
\*\*\* For information on availability, contact MGM Brakes Customer Service, 1-800-527-1534 x750 (U.S. & Canada), or for International email: [mail@mgmbrakes.com](mailto:mail@mgmbrakes.com)

NOTE: Product information and specifications subject to change without notice.



Replacement Parts		
P/N Series		3833
Model		LTR3030L3T
1	Kit - NP Chamber (a)	N/A
2	Kit - Nuts & Bolts	9003001
3	Clamp Band Assembly	8216045
4	Diaphragm	8017830
5	Kit - Push-Rod Assembly (a) SAE	9064003
5a	Kit - Push-Rod Assembly (a) METRIC	***
6	Return Spring	8068012
7	Kit - Center Hole Shield	9065002
8	NP Chamber Assembly (a)	9015122
9	Kit - Nuts & Washers SAE	9002001
9a	Kit - Nuts & Washers METRIC	***
10	Hex Nut - Yoke SAE	8130004
10a	Hex Nut - Yoke METRIC	***
11	Kit - Piggyback Plus SAE	N/A
12	External Breather Tube	9081001
<b>OPTIONAL ITEMS - For additional replacement parts, refer to Section 11.</b>		
Yoke Assembly		Refer to Replacement Parts Section 11
Boot & Retainer		Refer to Replacement Parts Section 11

NOTE: (a) To ensure correct stroke alert indicator positioning, these kits must be used only in the designated MGM Brakes units.



**External Breather-Tube**

Vents air from inside the protected area of the non-pressure chamber to effectively prevent entry of liquid and solid corrosive contaminants that can cause premature failure of the spring brake chamber.

\*\*\* For information on availability, contact MGM Brakes Customer Service, 1-800-527-1534 x750 (U.S. & Canada), or for International email: mail@mgmbrakes.com  
 NOTE: Product information and specifications subject to change without notice.